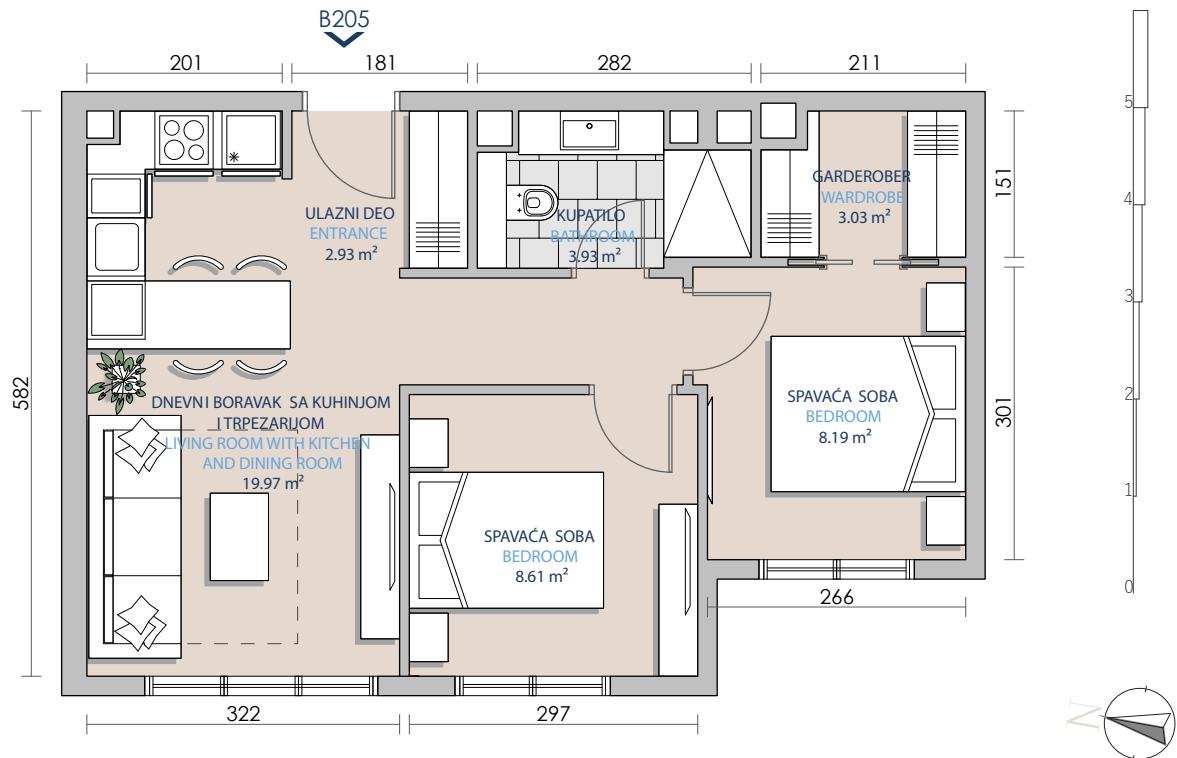


Površina stana (Total apartment area)	46.66m ²
Tip stana (Unit type)	Dve spavaće sobe (2 bedroom)
Broj stana (Unit number)	B205
Ulaz (Entrance)	B
Ime zgrade (Building name)	Objekat 1
Oznaka posebnog dela (Mark of specific part)	A12 (ulaz 1B)



GLAVNI PLAN (KEY PLAN)

SEKCIJA (KEY SECTION)

